

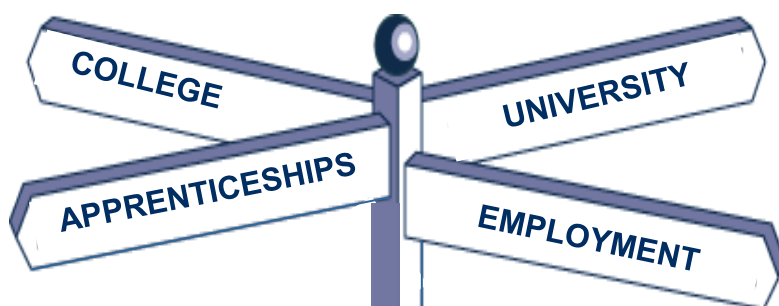


Pleckgate
HIGH SCHOOL

Ofsted
Outstanding
Provider



Year 9 Options 2022



'Aspire and Believe, Act and Succeed'



Wellbeing
AT PLECKGATE



**YOUTH
SPORT
TRUST**

SILVER QUALITY MARK 2016 –

Pleckgate High School
Pleckgate Road, Blackburn
Lancashire, BB1 8QA



Religious Education Council
of England and Wales



**Secondary
School of the
Year 2016 & 2017**



**Education
Partnership
Trust**

Call **01254 249134**
E-mail info@pleckgate.com
Visit pleckgate.com

Contents

Head of School Introduction

Key Stage 4 Curriculum

Core Subjects

English (Language)

English (Literature)

Combined Science

Separate Science

Mathematics

Religious Education

Physical Education

Options Choices

French

Geography

History

Art and Design

Business Studies

Computer Science

Creative iMedia

Health and Social Care

Hospitality and Catering

Music BTEC

Photography

Sports Studies

Technology



Pleckgate
HIGH SCHOOL

Dear Parent/Carer

Your child is at an important stage in their education when they will make important decisions about the subjects they will study in Year 10 and 11.

At Pleckgate we offer a range of GCSE courses as well as Cambridge Nationals and Technical Awards. These courses have changed considerably and now contain more content to be learned, higher order thinking skills and advanced problem-solving techniques. These take time to fully develop and embed and, in many cases, are subject specific. The school has been preparing your child through a rich Key Stage 3 curriculum and careers programme so that they are fully equipped to make informed choices on the next steps that will support their future aspirations.

This booklet outlines the Key Stage 4 curriculum information you will need to help students make these informed choices.

Please read this booklet carefully and see it as the beginning of the process. It is important that final decisions are made by your child but ideally with your input and agreement.

I am confident that your child is well-taught at Pleckgate and is provided with the right advice and guidance to help them make these important decisions. During Key Stage 4, students will regularly be given advice on planning workload and revision techniques. We want to work with you for the benefit of your child and value your support in this journey.

Please note that while we aim to offer all the courses advised in this booklet, in the event of a group being extremely small, we cannot guarantee that course will run. We will, of course, inform you on an individual basis if we foresee this problem once you have made your choices.

Aishling McGinty
Head of School

Key Stage 4 Curriculum

At Pleckgate High School we aim for all students to follow a broad and balanced curriculum in order to keep as many pathways open to students in the future.

The timetable for subjects is as follows:

Subject	Periods per week	Subject	Periods per week
English Language	3	Physical Education	1
English Literature	2	Option 1	3
Mathematics	4	Option 2	3
Science	4	Option 3	3
Religious Education	2		

Core Subjects

English, Mathematics, Science, Physical Education and Religious Education are compulsory for all students. We also offer a wide variety of other courses from which students may choose. Sets will be decided by subject teachers to ensure that your child can access the best possible learning in order to ensure the highest possible level of achievement.

Final Subject Allocation

Every effort will be made to ensure that your child is allocated a course in line with their preference. However, this cannot be guaranteed. It is inevitable that some students may need to change their selection due to over subscription or low uptake of a subject.

Careers Advice and Guidance

Careers guidance also plays an important part in preparing students for life beyond Pleckgate High School. This will include one-to-one appointments, guest speakers and our on-line careers programme, called Unifrog. Various options are possible beyond Pleckgate High School such as Sixth-Form Colleges for academic and vocational qualifications, National Traineeships, Modern Apprenticeships and other employment opportunities.

What is the English Baccalaureate?

The English Baccalaureate is not a qualification in itself. The measure recognises where students have secured a 'strong good' grade, currently grade 5 across a core of academic subjects – English, Mathematics, History or Geography, the Sciences and a Modern Foreign Language. The subjects included are designed to ensure all students have the opportunity to study a broad core of subjects, allowing further progression. For example, for students hoping to go to university, [The Russell Group guide on making informed choices for post-16](#) education identifies 'facilitating subjects' at A Level. These are subjects most likely to be required or preferred for entry to degree courses and ones that will keep the most options open to students.

MAKING YOUR CHOICE

Students will use the SIMS Pupil app to make their choices

Parents/Carers will then use the SIMS parent App to authorise the choices. An Options Form must also be submitted. Further information about how to access the SIMS Parent App will be shared with parents/carers prior to Parents Evening.

Teachers at school know you well enough to be able to assess which are your best subjects and your level of ability in each subject. This booklet should be used to help in the decision making process. In making the choices you should also consider:-

- Which subjects are your best?
- Which subjects do you enjoy doing?
- Which subjects do your teachers recommend?
- Will your chosen subject help you in your possible future career?
- Have you checked with everyone who can help and advise you?

How NOT to choose!

X

Don't choose a subject just because you like the teacher. It may well be that you do not have the same teacher next year.

Don't choose a subject because your best friend chooses it. It may be right for him/her but not for you!

Don't choose a subject because it looks easy, no GCSE courses are easy and they all require commitment, hard work and independent study.

REMEMBER

No system of Options can please everybody

Pay careful attention to your reserve option, these might end up being the subjects you do, so an informed reserve choice is of vital importance

EXAMINATION ENTRY

Final examination entry for any subject depends upon a number of factors including:-

- Good attendance
- Completion of mock examinations
- Evidence of achievement of examinable Level

WHAT TO DO NEXT

Read carefully through the next few pages, which give full details of all subjects. The pages indicate where possible the type of subject to follow i.e. whether it is compulsory or optional, which is also indicated in the Pupil SIMS app and on the Options form that students will be given to make their choices.

Think carefully before any decisions are made on which subjects to choose.

Students should use the booklet, their report and discussions with their teachers to help them choose their option subjects.

IMPORTANT DATES:

Tuesday 1st February

- Assembly to Year 9 students advising of the options process and advised to attend parents evening which will incorporate briefings regarding the options process

Thursday 3rd February

- Super Learning Day. Students will learn more about subjects and the possible career choices available to them depending on their subject choices.

Monday 7th February

- Year 9 Full subject reports are shared with parents/carers

Tuesday 8th February

- Year 9 Parents Evening and Options Choices Briefings

Thursday 10th February

- Follow up assembly for students to explain timescales for options process

Friday 21st February

- DEADLINE for return of options choices on sims app AND paper forms

Wednesday 3rd March

- Opportunity for parents or students who wish to discuss option choices to meet with a member of the senior leadership team

Friday 11th March

FINAL date for any change to options following appointment with a member of SLT.

Options Flowchart: 2022

Please see the flowchart below that provides more information about how the subject curriculum is organised for students when they begin their GCSE courses

Pathway P (curricular hours per week)	English and Literature (5 hrs) (2 GCSE's)	Maths (4 hrs)	Double Science (4 hrs) (2 GCSE's)	RE (2 hrs)	PE (1 hr)	Option A See Option choices (3 hrs)	Option B History Or Geography (3 hrs)	Option C Modern Foreign Language (3 hrs) French
Pathway Q	English and Literature (5 hrs) (2 GCSE'S)	Maths (4 hrs)	Double Science (4 hrs) (2 GCSE's)	RE (2 hrs)	PE (1 hr)	Option A See Option choices (3 hrs)	Option B History or Geography (3 hrs)	Option C See Option choices (3 hrs)
Pathway C	English and Literature (5 hrs) (2 GCSE'S)	Maths (5 hrs)	Double Science (4 hrs) (2 GCSE's)	RE (2 hrs)	PE (1 hr)	Options & additional support (7 hrs)		

Students at Key Stage 4 will follow one of three specifically planned 'Pathways', based upon their performance at Key Stage Three, Teacher Assessment and Target Grades.

Pathway 'P': all pupils within this Pathway will study English Language and Literature, Maths, RE and a Modern Foreign Language, as well as core PE. Their option will be whether they choose to study Geography or History; or to study Triple Science (3 x GCSE's) or Double Science (2 x GCSE's). If they choose Double Science they have an option choice from Block A.

Pathway 'Q': all pupils within this Pathway will study English Language and Literature, Maths, RE and Core and Additional Science as well as Core PE. They will be given THREE Option choices.

Pathway 'C': all pupils within this Pathway will follow a bespoke curriculum including English, Maths, Science and RE as well as tailored qualifications following discussions with Miss Knowles.

Year 9 Options 2022

Please select one option and one reserve choice from each option block and return your choices via the SIMs Student app. If you wish to have further discussions about your child's pathway please book an appointment on our online system.

Compulsory Subjects for all students		Recommended pathway for pupils in P band		
English Literature English Language Maths Science (Combined course) Religious Education Core PE (none examination)	Option A	Option B	Option C	
	Separate Science (Converting combined into separate sciences)	History Geography	French	
	Art & Design			
	Business			
	Computer Science			
	Creative iMedia			
	Health and Social Care			
	Hospitality & Catering			
	Music BTEC			
	Photography			
	Sports Studies			
	Technology			
	Recommended pathway for pupils in Q band			
Option A	Option B	Option C		
Art & Design	History	Art & Design		
Business	Geography	Business		
French		French		
Computer Science		Computer Science		
Creative iMedia		Creative iMedia		
Health and Social Care		Health and Social Care		
Hospitality & Catering		Hospitality & Catering		
Music BTEC		Music BTEC		
Photography		Photography		
Sports Studies		Sports Studies		
Technology		Technology		

Core Subjects

ENGLISH LANGUAGE GCSE



Examination Board:

Eduqas English Language

How will I be assessed?

The English Language qualification is assessed through formal examinations as follows:

English Language:

1 x 1hr 45min exam and 1 x 2hr exam

1 x Spoken Language individual presentation

The English Curriculum

Alongside the study of the set texts for the English Literature GCSE, all pupils write for a wide range of purposes and audiences. In creative writing, there is a strong emphasis on completing full narratives, writing from both personal experience and being more imaginative. Viewpoint writing is also explored in depth, across a range of topics and formats including speeches, letters, articles, reports and reviews. This leads on to an individual spoken language presentation, when pupils are given the opportunity to express their opinion on a topic that is personal to them and that they feel passionate about. This is internally assessed at the end of Year 10, and students can be awarded a pass, merit or distinction mark, which is recorded on their GCSE certificate.

Active reading of nonfiction, including understanding the writer's craft and viewpoint, is also explored in detail. Students read a range of 20th century and pre-19th century texts, often linked by theme, to look at the different perspectives across time about topics that are still pertinent today. Students also read a wide range of short stories and extracts from short stories to analyse the writer's craft and understand how writers create impressions of characters, settings and different moods and atmospheres.

How can I progress further with an English GCSE?

English qualifications provide an excellent basis for any career route either academic or vocational. Please see below for examples of both pathways.

Progression Route – 'Academic'

- A Level English courses
- Degree in English
- All university courses require grades 9-4 at least, in English, in order to get onto degree courses.
- Pupils wishing to do A Levels at sixth form level are therefore required to have this qualification in order to progress on to A Level courses.

Progression Route – 'Vocational'

- | | |
|------------------|--------------------|
| • Journalism | • Marketing |
| • Librarian | • Public relations |
| • Teaching | • Advertising |
| • Translator | • Publishing |
| • Administration | • Careers in Law |

N.B.: It is a legal requirement that any student who does not achieve a 'good' GCSE grade in English (currently 'Grade 4') at the end of Year 11 will be required to continue to study the subject until 18.

ENGLISH LITERATURE GCSE



Examination Board:

AQA English Literature

How will I be assessed?

The English Literature qualification is assessed through formal examinations as follows:

English Literature:

1 x 1hr 45min exam and 1 x 2hr 15min exam

The English Literature Curriculum

Our English Literature curriculum is engaging and allows pupils to study a range of full texts at GCSE. These include “Macbeth” by William Shakespeare, “A Christmas Carol” by Charles Dickens, “An Inspector Calls” by JB Priestley and a range of poetry from the AQA “Power and Conflict” cluster of poems.

Students read the full texts, intensely studying them in Year 10, and then refining their exam skills in Year 11. Students are encouraged to read independently, and home learning is needed to enable students to develop skills and knowledge required in the examinations. We organise theatre visits and invite theatre companies into school to allow students to engage with the texts in performance. Through the study of Literature, students learn to link texts with their contexts and empathise with situations in different historical periods, and understand how writers were affected by the contexts they were writing in.

How can I progress further with an English Literature GCSE?

English qualifications provide an excellent basis for any career route either academic or vocational. Please see below for examples of both pathways.

Progression Route – ‘Academic’

- A Level English courses
- Degree in English
- All university courses require grades 9-4 at least, in English, in order to get onto degree courses.
- Pupils wishing to do A Levels at sixth form level are therefore required to have this qualification in order to progress on to A Level courses.

Progression Route – ‘Vocational’

- | | |
|--------------|--------------------|
| • Journalism | • Administration |
| • Librarian | • Marketing |
| • Teaching | • Public relations |
| • Translator | • Advertising |
| • Publishing | • Careers in Law |

N.B.: It is a legal requirement that any student who does not achieve a ‘good’ GCSE grade in English (currently ‘Grade 4’) at the end of Year 11 will be required to continue to study the subject until 18.

COMBINED SCIENCE GCSE

Examination Board:

AQA

How will I be assessed?

Combined Science (Combination of Chemistry, Biology, Physics)

2 GCSE's



Study all three sciences but in less depth than Separate Sciences to gain 2 GCSE's. The course is a mixture of theory and practical science. The course is assessed by 6 x 1hr 15min exams.

The Science Curriculum

If you choose combined science you will still study Biology, Chemistry and Physics, however you will not cover the same amount of content in each topic as you would in separate science. You will receive 2 GCSE grades but they are not attached to any particular science, they are a 'combination' of your performance in all the sciences.

You will have theory lessons which will increase and enhance your subject knowledge and practical lessons where you will develop your skills. As you develop as a scientist you will learn to;

- Develop hypotheses
- Design investigations
- Use scientific apparatus to take accurate and precise readings
- Present results and analyse your data
- Draw conclusions and evaluate the validity of your findings.

You will also engage with the ethical dilemmas which accompany some scientific developments such as the uses of genetic engineering or the role of nuclear energy in combating climate change. In Combined Science you will undertake required practicals which are experiments that you will be asked about during the examinations. You will need to know the methods, how to use the equipment and how to analyse the results.

Biology	Chemistry	Physics
Osmosis Food tests Enzymes Photosynthesis Field investigations	Making salts Electrolysis Temperature changes Chromatography Water purification	Resistance V-I characteristics Density Specific heat capacity Force and extension Acceleration Waves

How can I progress further with science GCSEs?

Combined science can also lead to A-level or a vocational course. If you wish to study sciences at A-Level then separate science is the better option.

Progression Route – 'Vocational'

- Technician
- Health occupations (physiotherapy, dental or veterinary nursing etc..)
- Electrician
- Sports science
- Electronics

SEPARATE SCIENCES GCSE

Examination Board:

AQA

How will I be assessed?



Separate Sciences (Chemistry, Biology, Physics) 3 GCSE's

Study a GCSE in each science. The course is a mixture of theory and practical science. The course is assessed by 2 x 1hr 45 min exams per subject.

The Separate Science Curriculum

You will study for a GCSE in Biology, Chemistry and Physics. This means you will receive 3 GCSE grades. You will have theory lessons which will increase and enhance your subject knowledge and practical lessons where you will develop your skills. As you develop as a scientist you will learn to;

- Develop hypotheses
- Design investigations
- Use scientific apparatus to take accurate and precise readings
- Present results and analyse your data
- Draw conclusions and evaluate the validity of your findings.

You will also engage with the ethical dilemmas which accompany some scientific developments such as the uses of genetic engineering or the role of nuclear energy in combating climate change. You will take required practicals, experiments that you will be asked about during the examinations. You will need to know the methods, how to use the equipment and how to analyse the results.

Biology	Chemistry	Physics
Culturing microorganisms Effect of antibiotics on bacterial growth Osmosis Food tests Enzymes Photosynthesis Reaction time Germination Field investigation	Making salts Neutralisation Electrolysis Temperature changes Rates of reaction Chromatography Identifying ions Water purification	Thermal insulation Resistance V-I characteristics Density Specific heat capacity Force and extension Acceleration Waves Light Radiation and absorption

How can I progress further with science GCSEs?

Separate sciences are the best preparation for pupils wishing to study sciences at A- level.

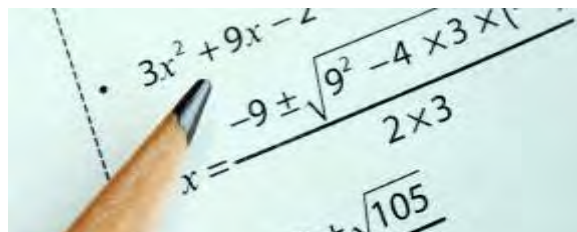
Progression Route – 'Academic'

- Medicine
- Dentistry
- Veterinary
- Engineering (Civil, Mechanical, Electrical)
- Research scientist (industrial, medical and academic)

MATHEMATICS GCSE

Examination Board:

Edexcel



How will I be assessed?

Paper 1 – Non-calculator (Foundation and Higher papers – 1hr 30mins)

Paper 2 – Calculator (Foundation and Higher papers – 1hr 30 mins)

Paper 3 - Calculator (Foundation and Higher papers - 1hr 30 min)

The mathematics Curriculum

There are 243 topics which are tested on the Mathematics papers. These are broadly divided into the areas of Algebra, Ratio and Proportion, Number, Data and Statistics and Geometry. Any of the topics on the specification can appear on either/all of the papers.

A willingness to persevere with an activity when you feel unsure of your ability is essential. You will be expected to cope with not knowing and to use problem solving and reasoning skills to work out the answers to problems. You need to be prepared to work and think hard (but the buzz you get when things suddenly fall into place is worth waiting for!).

How can I progress further with a mathematics GCSE?

Almost all jobs and careers require you to have a maths GCSE but there are also many careers in which you would make a lot of use of your mathematics. These include business management, psychology, banking, ICT, engineering and medicine, to name just a few. You will also find that you will need a 5-9 grade for entry to most university courses.

Progression Route – ‘Academic’

- A Level mathematics and engineering courses
- Degrees in mathematics, statistics, all types of engineering, accounting and finance
- Pupils wishing to do A Levels at sixth form level are therefore required to have this qualification in order to progress on to A Level courses.

Progression Route – ‘Vocational’

- BTEC courses
- Apprenticeships
- Extended Diplomas

N.B.:

It is a legal requirement that any student who does not achieve a ‘good’ GCSE grade in mathematics (currently ‘Grade 4’) at the end of Year 11 will be required to continue to study the subject until 18.

RELIGIOUS STUDIES GCSE

Examination Board:

Edexcel

How will I be assessed?

2 x 1hr 45min exams

- Exam 1- Religion and Ethics: Christianity
- Exam 2- Religion, Peace and Conflict: Islam

The English Curriculum

This qualification is for students who enjoy learning about the two biggest religions in the UK today; Christianity and Islam and the different beliefs within them. It is for students who love giving their own opinion but also listening to other people's opinions and considering why not everyone agrees.

Religious Studies prepares students to take part in the development of tomorrow's rapidly changing world. Religious Education contributes greatly to understanding the diversity of religion and non-religious belief in our community and the world today. It helps to foster young people's own cultural, social, spiritual and moral development. The lessons learned in Religious Education prepare students for responsibilities, experiences and opportunities later in life. Religious Education allows young people growing up in a diverse society to understand the views and opinions of people whose beliefs and values differ from their own. Lessons provide a space for young people to reflect on their own ideas and develop their thoughts about questions of meaning and ethics. The issues of religion and belief discussed in lessons frequently top the news agenda and RE helps make sense of them.

The course consists of the following topics:

- **Religion and Ethics: Christianity**- Christian Beliefs, Marriage and the Family, Living the Christian Life and Matters of Life and Death.
- **Religion, Peace and Conflict: Islam**- Muslim Beliefs, Crime and Punishment, Living the Muslim Life and Peace and Conflict.

How can I progress further with a Religious Studies GCSE?

Religious Studies qualifications provide an excellent basis for any career route either academic or vocational. Please see below for examples of both pathways.

Progression Route – 'Academic'

There are a wide range of courses that you can go on to study with a GCSE in Religious Studies:

- | | |
|--------------|--------------|
| • A-Levels | • Psychology |
| • Philosophy | • Law |
| • Sociology | • Politics. |

Progression Route – 'Vocational'

- | | |
|--|---------------|
| • Public Service Industries such as the Police | • Teaching |
| • Social Worker | • Law |
| • Civil Service | • Ministry |
| • Youth Worker | • Hospitality |
| • Charity Officer | • Tourism |



PHYSICAL EDUCATION (Core)



Examination Board:

NON EXAMINED

Compulsory one hour of physical education is required for all KS4 pupils.

Pupils who wish to take Physical Education as an option should refer to the subject pages for GCSE PE or Cambridge National Sports Studies.

What are the key areas of activity?

- Badminton
- Football
- Netball
- Table tennis
- Fitness training
- Rounders
- Cricket
- Athletics

Core PE

All students receive one hour of physical education each week with a key focus on activity and the importance of leading a healthy lifestyle. Other benefits taught include participation in lifelong sport, and the promotion of transferable skills such as communication, leadership skills, resilience, taking responsibility and working as a team.

How can I progress further with compulsory physical education?

- Develop health and fitness
- Contribute towards good mental health
- Develop hobbies and interests outside of the classroom (this is an important part of a student's CV)
- Develop skill levels in a range of sports
- Learn aspects of health and safety
- Develop self esteem

Option Choices



GEOGRAPHY GCSE

Examination Board:

EDEXCEL

How will I be assessed?

There will be three, 90 minute written GCSE examinations at the end of year 11.

Examinations are a mixture of multiple choice, short answer and extended answer responses. Marks are also awarded for accurate spelling, punctuation and grammar.

The Geography Curriculum

Component 1: The Physical Environment: (1hr 30min exam) 37.5% of GCSE

The changing landscapes in the UK (Rivers and Coasts), weather hazards and climate change, ecosystems, biodiversity and management.

Component 2: The Human Environment: (1hr 30min exam) 37.5% of GCSE

Changing cities, global development, resource management (energy resources).

Component 3: Geographical Investigations: (1hr 30min exam) 25% of GCSE

Urban and rural fieldwork, UK challenges

Students will undertake two field trips to contrasting environments to investigate the physical and human world around them. The data and statistics gathered from the field trips will be used to answer examination questions in component 3.

How can I find out more information?

You can talk to Miss Swales or your Geography teacher.

How can I progress further with a Geography GCSE?

There are a number of different qualifications at Level 3 (A-Level) including geography, geology and environmental sciences. Geography is sought-after by universities, due to it being a broad subject, as it develops a range of qualities and skills that are beneficial to studying at Higher Education institutions. Therefore, many students go to University to study a wide variety of courses including engineering, architecture, medicine, teaching, town planning and The Sciences i.e. meteorology, hydrology and oceanography. Other routes see careers working for government departments (Environment Agency, DEFRA) and charities dealing with the impact of human and natural disasters.

There are also vocational courses which rely on geographical skills, knowledge and understanding such as leisure and tourism and hotel management. Skills that are developed through the study of geography include critical thinking and problem solving. Regardless of your career path, future employment will depend largely on your ability to communicate with colleagues and clients, sharing your expertise to meet their needs and overcome the challenges that you are tasked with.

A previous Year 11 pupil had this to say about the course:-

"I enjoy learning about new places and linking it in with my everyday life. The work is interesting and the fieldwork trip was the best!"



HISTORY GCSE

Examination Board:

AQA History

How will I be assessed?

Two Exams both 2 hours

The History Curriculum

1D: America, 1920-1973: Opportunity and Inequality

Divided Society (Crime, Prohibition, Ku Klux Klan), New Deal, Great Society (Civil Rights, McCarthyism and Equal Rights for Women)

Module 2 - Conflict and Tension in Asia, 1950-75

Conflict in the Korean and Vietnam Wars

2A: Britain: Health and the People c.1000 to present day

Thematic study of how and why medicine and public health have developed from the influence of ancient medical treatment to the NHS today.

Elizabethan England 1558-1603

Focus on the greatest female of all time – we chart how Elizabeth turned a country torn apart by conflict that set father against son, brother against brother into a shining light of progress – despite having some serious sister issues! This will also include a compulsory trip.

How can I progress further with a History GCSE?

History provides an excellent basis for any career route either academic or vocational. Please see below for examples of both pathways.

Progression Route – ‘Academic’

- A Level History courses
- Degree in History

Progression Route – ‘Vocational’

- Law
- Politics
- Medicine
- Medicine
- Pharmacy
- Dentistry
- Business



ART & DESIGN GCSE

Examination Board:

AQA

How will I be assessed?

Students are assessed through coursework and formal examinations as follows:

Coursework:

You will undertake at least two projects during Year 10 and Year 11. Your coursework is at least one of these projects, plus the 'best bits' of your other work.

Exam:

Students have a 10 hour exam that takes place at normal school lesson times – you will spend all 5 periods of two days in the art room working on your exam. Don't panic - you WON'T spend 10 straight hours in an exam room!

The Art Curriculum

You will be given a starting point, such as 'portraits', 'buildings', 'music' or 'fashion'. You will then look at the work of other artists and photographers and develop YOUR OWN ideas from your own starting points (photos) which will be developed using different materials and techniques to create a 'final piece' over several months. In Art & Design this involves drawing, painting, pastels, sculpture or any other media.

Students require good imagination and creativity as you will be marked on how original and unique your work is!

How can I progress further with an Art GCSE?

The examining board recently did a survey of 100,000 different UK businesses and found that Art based GCSEs were the THIRD most sought-after qualification to these employers! Over 1,000,000 people in the UK are currently working in Art related jobs. Almost EVERYTHING these days is internet based, and the internet relies on Art and what is called 'visual literacy'. Graphics, Media, magazines, web or game design – they all need Art!

Progression Route – 'Academic'

- A Level or BTEC in Art, Fine Art, Graphics, Fashion, 3D or Ceramics courses
- Degree or Higher National Diploma ('HND') level in all of the above

Progression Route – 'Vocational'

Painter, Graphic Designer, Furniture or Interior Designer, Jewellery, Fashion designer, Website Design, Gaming Development, Television or Media, Museum or Gallery Curator, Sculptor, Book Illustrator, Makeup Artist, Cake or Food Decorator, Tattoo Artist – the list is endless!



BUSINESS GCSE

Examination Board:

Edexcel

How will I be assessed?

Students will sit two examinations:

Theme 1 - Investigating small business (50%)

Theme 2 - Building a Business (50%)

The Business Curriculum

Theme 1 concentrates on the key business concepts, issues and skills involved in starting and running a small business. It provides a framework for students to explore core concepts through the lens of an entrepreneur setting up a business. In this theme students will be introduced to local and national business contexts and will develop an understanding of how these contexts impact business behaviour and decisions.

Theme 2 examines how a business develops beyond the start-up phase. It focuses on the key business concepts, issues and decisions used to grow a business, with an emphasis on aspects of marketing, operations, finance and human resources. It also considers the impact of the wider world on the decisions a business makes as it grows. In this theme students will be introduced to national and global business contexts and will develop an understanding of how these contexts impact business behaviour and decisions.

How can I progress further with this qualification?

- Level 3, AS and A level Business
- Degree-level qualifications in Business and Enterprise
- Management qualifications
- Careers in management, marketing, project management, human resources

How can I find out more? For further information on this course, you should talk to:

Mr Moore.



COMPUTER SCIENCE GCSE

Examination Board

Edexcel



How will I be assessed?

Students will sit one paper based examination and one on screen practical exam:

Unit 1 - Principles of Computer Science (50%)

Unit 2 - Application of Computational Thinking (50% on-screen, practical assessment of programming using Python)

The Computer Science Curriculum

- Understand and apply the fundamental principles and concepts of computer science, including abstraction, decomposition, logic, algorithms, and data representation
- Understand how computers manipulate binary data arithmetically (binary addition, binary shifts, two's complement signed integers)
- Analyse problems in computational terms through practical experience of solving such problems, including designing, writing and debugging programs using a high-level programming language (Python)
- Think creatively, innovatively, analytically, logically and critically
- Understand the components that make up digital systems, and how they communicate with one another and with other systems
- Understand the impacts of digital technology to the individual and to wider society apply mathematical skills relevant to computer science.

How can I progress further with this qualification?

- Level 3, AS and A level Computer Science
- Computer Programmer
- Software Engineer
- Database Administrator
- Systems Administrator
- ICT technician or network manager

How can I find out more? For further information on this course, please speak to Mr Moore

CREATIVE IMEDIA

Cambridge National

Examination Board:

OCR - Cambridge National Level 2



How will I be assessed?

The course consists of a single written examination and a further 2 coursework units which are completed in school and externally moderated by the examination board

Examination Unit:

R093: Creative iMedia in the media industry

1 hour 30 mins Written exam paper.

Coursework Units:

R094: Visual identity and digital graphics

R097: Interactive digital media

The Creative iMedia Curriculum

The Cambridge Nationals in Creative iMedia will is a vocational course designed to equip students with a range of creative media skills and provide opportunities to develop, in context, desirable, transferable skills such as research, planning, and review, working with others and communicating creative concepts effectively.

R093: Creative iMedia in the media industry

- Sectors, products and job roles that form the media industry.
- Legal and ethical issues considered and the processes used to plan and create digital media products.
- How media codes are used within the creation of media products to convey meaning, create impact and engage audiences.

R094: Visual identity and digital graphics

- Developing visual identities for clients.
- Apply the concepts of graphic design to create original digital graphics which incorporate their visual identity to engage a target audience.

R097: Interactive digital media

- Design and create interactive digital media products for chosen platforms.
- Select, edit and repurpose multimedia content of different kinds and create the structure and interactive elements necessary for an effective user experience.

How can I progress further with a Level 2 Certificate in Creative iMedia?

Completing this course will provide students with the basic skills for further study of Level 3 Media, ICT and Creative Arts courses and creative and technical job roles within graphic design and media disciplines.

Progression Route – ‘Vocational’

- Graphic Designer /Digital Illustrator/Graphic Artist
- Computer Game (Design roles)
- Journalist

HEALTH & SOCIAL CARE

BTEC



Examination Board:

Pearson BTEC level 1 and 2

How will I be assessed?

Component 1: Human Lifespan Development – 30 % controlled assessment

Component 2: Health and Social Care Services and Values – 30% controlled assessment

Component 3: Health and Wellbeing - 40% 2 hour examination

The Health and Social Care Curriculum

Component 1: Human Lifespan Development

Students will explore different aspects of growth and development and the factors that can affect this across the life stages. They will explore the different events that can impact on individuals' physical, intellectual, emotional and social development and how individuals cope with and are supported through changes caused by life events.

Component 2: Health and Social Care Services and Values Learners will explore health and social care services and how they meet the needs of service users. They will also study the skills, attributes and values required when giving care.

Component 3: Health and Wellbeing Learners will explore the factors that affect health and wellbeing, learning about physiological and lifestyle indicators, and person-centred approaches to make recommendations to improve an individual's health and wellbeing.

How can I progress further with this qualification?

Students can go on to study Level 3 Health and Social Care or they can use this qualification and study A Levels in a broad range of subjects relating to the health and social care sectors, for example, they may choose to study psychology or medicine.

Progression Route

- Child care
- Psychology
- Nursing
- Social work
- Care worker
- Teaching
- Nutritionist

HOSPITALITY AND CATERING

Vocational Award



Examination Board:

Eduqas Level 1 and 2 Vocational Award in Hospitality and Catering

How will I be assessed?

Hospitality and Catering is assessed by:

- an on screen examination taken at the end of Year 10 (1 hour 30 mins)
- non- examined unit (coursework) which includes a 3 hour practical examination.

You will be graded a Level 2 Distinction to a Level 1 Pass

The Hospitality and Catering Curriculum

This course will develop your knowledge and understanding of a range of hospitality and catering providers; how they operate and what they have to take into account to be successful. There is the opportunity to learn about issues related to nutrition and food safety and how they affect successful hospitality and catering operations. You will also have the opportunity to develop high level food preparation and cooking skills as well as transferable skills of problem solving, organisation and time management, planning and communication.

Unit 1 - 'The Hospitality and Catering Industry' which is examined at the end of year 10 (40%).

Unit 2 - 'Hospitality and Catering in Action' which is a centre assessed task completed in Year 11 and includes high level practical work which is carried out in both Years 10 and 11 (60%).

There will be the expectation that pupils will provide their own ingredients for practical sessions.

How can I progress further with a Vocational Award in Hospitality and Catering?

Employment in hospitality and catering can range from waiting staff, receptionists and catering assistants to chefs, hotel and bar managers and food technologists in food manufacturing. All of these roles require further education and training either through apprenticeships or further and higher education.

However this award covers content that would be considered beneficial to professions such as teaching, nursery assistants, nursing and a range of other caring and medical professions.

Progression Route –

- Level 3 Hospitality or Catering
- Apprenticeships within the Hospitality and catering industry
- A-Levels

MUSIC BTEC



Examination Board:

Pearson

BTEC Level 1/Level 2 Tech Award in Music Practice

How will I be assessed?

Component 1: Exploring Music Products and Styles - Internal Assessment

Component 2: Music Skills Development - Internal Assessment

Component 3: Responding to a Music Brief - External Assessment

The Music GCSE Curriculum

Component 1: Exploring Music Products and Styles

You will develop your understanding of different types of music products and the techniques used to create them. You will practically explore the key features of different styles of music and music theory and apply your knowledge and understanding to developing your own creative work.

Component 2: Music Skills Development

You will participate in workshops and classes where you will develop technical, practical, personal and professional skills and specialise in at least two of the following areas: music performance, creating original music or music production.

Component 3: Responding to a Music Brief

You will focus on a particular area of the music sector that excites and appeals to you and respond to a music brief as a composer, performer or producer. Features explored are; performing stylistically accurate covers, creating original music using existing stylistic frameworks and stylistic use of a digital audio workstation and associated hardware to create an original piece of music from a given starting point.

Progression Route - 'Academic'

A Level Music/Performing Arts, BA(Hons) degree in Music/Performing Arts, MA or PhD in Performance/Composition.

Progression Route - 'Vocational'

- Composer
- Musician
- Teacher/Tutor
- Sound Engineer
- Recording Studio Manager

PHOTOGRAPHY GCSE

Examination Board:

AQA



How will I be assessed?

Students are assessed through coursework and formal examinations as follows:

Coursework:

You will undertake at least two projects during Year 10 and Year 11. Your coursework is at least one of these projects, plus the 'best bits' of your other work.

Exam:

Students have a 10 hour exam that takes place at normal school lesson times – you will spend all 5 periods of two days in the art room working on your exam. Don't panic - you WON'T spend 10 straight hours in an exam room!

The Photography Curriculum

You will be given a starting point, such as 'portraits', 'landscape', 'music' or 'fashion'. You will then look at the work of other photographers and develop YOUR OWN ideas from your own starting points (photos) which will be developed using different materials and techniques to create a 'final piece' over several months.

The photography GCSE is very similar to the Art & Design GCSE in terms of 'creativity' and 'imagination', but Photography is less 'drawing and painting' and more software based using Photoshop and animation.

Photography still involves some drawing and painting, though not to the same standard or amount as the Art GCSE.

Both courses require a good imagination and creativity as you will be marked on how original and unique your work is! We have a set of 'DSLR' cameras that students use, but we also work a lot with iPads which all students have.

How can I progress further with a Photography GCSE?

The AQA examining board recently did a survey of 100,000 different UK businesses and found that Art based GCSEs such as Photography were the THIRD most sought-after qualification to these employers! Over 1,000,000 people in the UK are currently working in Art/Photography related jobs. Almost EVERYTHING these days is internet based, and the internet relies on software and Photography! Graphics, Media, Film making & editing, magazines, web or game design – they all need Photography!

Progression Route – 'Academic'

- A Level or BTEC in Graphics, Photography, Fashion or Film Study courses
- Degree of Higher National Diploma ('HND') level in all of the above

Progression Route – 'Vocational'

Graphic Designer, Film Editor, App Developer, YouTube creator, Fashion designer, Website Design, Gaming Development, Television or Media, Museum or Gallery Curator – the list is endless!

SPORTS STUDIES

Cambridge National



Examination Boards:

OCR

How will I be assessed?

The course is assessed as follows:

R184: Contemporary issues in sport (marked by an exam and assessed externally)

R185: Performance and leadership in sports activities

R186: Sports and the media

The Curriculum

You will develop knowledge, understanding and skills that you can apply to a range of approaches that are relevant to the workplace or higher education. You will be able to work with independence to create material which shows effective planning, development and evaluation, and an ability to demonstrate practical skills and qualities.

You will develop the skills to produce work that is complete and coherent, demonstrating independence and understanding. You will be able to:

- Recall, select and apply knowledge and understanding, using practical sporting examples
- Demonstrate knowledge and understanding of physical and psychological factors that affect performance as well as demonstrating your practical performance skills within two sporting activities
- Identify, plan and carry out a range of activities and exercises to prepare for, and recover from, sporting activities
- Demonstrate awareness of how to meet specific needs when developing and delivering different physical activity programmes
- Use technical language and terminology correctly
- Demonstrate evaluative skills.

How can I progress further with a Cambridge National in Sport Studies?

These skills will help you progress onto further study in the Exercise, Physical Activity, Sport and Health sector. This may be Level 3 vocational qualifications, such as the Cambridge Technical in Sport and Physical Activity, AS or A-Levels, such as Physical Education, Psychology, Sociology, Sport or Media or an apprenticeship in Community activator coach, Leisure team members, Personal trainer or Outdoor activity instructor.

This can include progression into areas such as:-

- Recreational Management
- Leisure Centres
- Coaching
- Officiating
- The Fitness Industry
- The Armed Forces and Civil Service
- Physiotherapy
- Teaching
- Events management

DESIGN & TECHNOLOGY

GCSE



Examination Board:

Eduqas Design and Technology

How will I be assessed?

1 x 2hr examination (50%) taken at the end of Year 11

1 x non-examined assessment (coursework) which takes approx. 35 hours (50%)

You will be graded 9-1

The Design and Technology Curriculum

The written examination: A mix of short answer, structured and extended writing questions assessing your knowledge and understanding of five clear and distinct topic areas:

- design and technology and our world
- smart materials, electronic systems and programmable components
- mechanical components and devices
- materials - characteristics and functions of a wide range of wood, metal, paper, plastics and boards. One material will be studied in more depth than others.

The Non-examined assessment: This is based on a design and make task set by EDUQAS, assessing your ability to:

- identify, investigate and outline design possibilities
- design and make prototypes
- analyse and evaluate design decisions and wider issues in design and technology

Students will be expected to be creative and innovative and come up with their own ideas for individual designs for new products independently. They will be able to choose to work with a range of different materials and select one for their non-examined assessment.

How can I progress further with a Design and Technology GCSE?

This course provides a suitable foundation for the study of design and technology and Engineering at either AS, A level or apprenticeships.

Progression Route – ‘Academic’

- A level in Product design
- A Level in Engineering

Progression Route – ‘Vocational’

- Product designer
- Architect
- Electrician
- Engineering – a wide range of further education courses are available