

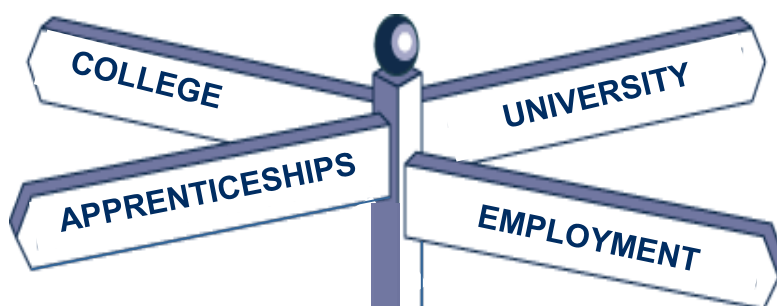


Pleckgate

HIGH SCHOOL



Year 9 Options 2023



'Aspire and Believe, Act and Succeed'



Wellbeing
AT PLECKGATE



**YOUTH
SPORT
TRUST**

SILVER QUALITY MARK 2016 –

Pleckgate High School
Pleckgate Road, Blackburn
Lancashire, BB1 8QA



Religious Education Council
of England and Wales



**Secondary
School of the
Year 2016 & 2017**



**Education
Partnership
Trust**

Call **01254 249134**
E-mail info@pleckgate.com
Visit pleckgate.com



Pleckgate
HIGH SCHOOL

Contents

Headteacher's Introduction

Key Stage 4 Curriculum

Core Subjects

English (Language)

English (Literature)

Combined Science

Separate Science

Mathematics

Religious Education

Physical Education

Options Choices

French

Arabic

Urdu

Geography

History

Art and Design

Business Studies

Computer Science

Creative iMedia

Health and Social Care

Hospitality and Catering

Music

Photography

Sports Studies

Design Technology



Dear Parent/Carer

Your child is at an important stage in their education when they will make important decisions about the subjects they will study in Year 10 and 11.

At Pleckgate we offer a broad range of qualifications to support all curriculum areas, these include GCSEs, Cambridge Nationals and BTEC Awards.

Your child has been studying a rich Key Stage 3 curriculum, including PSHE and a well sequenced carers programme that will support your child in making informed choices about their future aspirations.

This booklet outlines the Key Stage 4 curriculum information about each subject area you will need to help your child make these informed choices.

Please read this booklet carefully and see it as the beginning of the process. It is important that final decisions are made as a result of discussions with your child, class teachers during parent evenings and a review of academic information for each subject area.

Please note that while we aim to offer all the courses advised in this booklet, in the event of a group being extremely small, we cannot guarantee that course will run. We will, of course, inform you on an individual basis if we foresee this problem once you have made your choices.

A handwritten signature in black ink, appearing to read "J. McKenzie".

James McKenzie
Deputy Headteacher

Key Stage 4 Curriculum

At Pleckgate High School we aim for all pupils to follow a broad and balanced curriculum in order to keep as many pathways open to pupils in the future.

The timetable for subjects is as follows:

Subject	Periods per week	Subject	Periods per week
English Language	3	Physical Education	1
English Literature	2	Option 1	2.5
Mathematics	4	Option 2	2.5
Science	5	Option 3	2.5
Religious Education	2	PSCHE	0.5

Core Subjects

English, Mathematics, Science, Physical Education and Religious Education are compulsory for all pupils. We also offer a wide variety of other courses from which pupils may choose. Sets and groups will be decided by subject teachers to ensure that your child can access the best possible learning in order to ensure the highest possible level of achievement.

Final Subject Allocation

Every effort will be made to ensure that your child is allocated a course in line with their preference. However, this cannot be guaranteed. It is inevitable that some pupils may need to change their selection due to over subscription or low uptake of a subject.

Careers Advice and Guidance

Careers guidance also plays an important part in preparing pupils for life beyond Pleckgate High School. This will include one-to-one appointments, guest speakers and our on-line careers programme, called Unifrog. Various options are possible beyond Pleckgate High School such as Sixth-Form Colleges for academic and vocational qualifications, National Traineeships, Modern Apprenticeships and other employment opportunities.

What is the English Baccalaureate?

The English Baccalaureate is not a qualification in itself. The measure recognises where pupils have secured a 'strong good' grade, currently grade 5 across a core of academic subjects – English, Mathematics, History or Geography, the Sciences and a Modern Foreign Language. The subjects included are designed to ensure all pupils have the opportunity to study a broad core of subjects, allowing further progression. For example, for pupils hoping to go to university, [The Russell Group guide on making informed choices for post-16](#) education identifies 'facilitating subjects' at A Level. These are subjects most likely to be required or preferred for entry to degree courses and ones that will keep the most options open to pupils. The subjects identified are those included in the English Baccalaureate – Mathematics, English, Physics, Biology, Chemistry, Geography, History and Modern Foreign Languages.

MAKING YOUR CHOICE

Option Recommendation Forms

The school knows you well enough to be able to assess which are your best subjects and your level of ability in each subject. This booklet should be used to help in the decision making process. In making the choices you should also consider:-

- Which subjects are your best?
- Which subjects do you enjoy doing?
- Which subjects do your teachers recommend?
- Will your chosen subject help you in your possible future career?
- Have you checked with everyone who can help and advise you?

How NOT to choose!

X

Don't choose a subject just because you like the teacher. It may well be that you do not have the same teacher next year.

Don't choose a subject because your best friend chooses it. It may be right for him/her but not for you!

Don't choose a subject because it looks easy - all subjects involve two years of continuous hard work and commitment.

REMEMBER

- No system of Options can please everybody
- You must be prepared to study your reserve choices so choose these carefully

EXAMINATION ENTRY

Final examination entry for any subject depends upon a number of factors including:-

- Good attendance
- Completion of mock examinations
- Evidence of achievement of examinable Level

WHAT TO DO NEXT

Read carefully through the next few pages, which give full details of all subjects. The pages indicate where possible the type of subject to follow i.e. whether it is compulsory or optional, which is also indicated on the Options Form.

Think carefully before any decisions are made on which subjects to choose.

Pupils should use the booklet, their report and discussions with their teachers to help them choose their option subjects.

IMPORTANT DATES :

Thursday 2nd February

Year 9 Options Choices Briefings

Friday 3rd February

Option Booklet published on Google Classroom and school website

Wednesday 8th February

Choices made available on SIMS Parent App

Monday 20th February

Deadline for option choices to be made on SIMS Parent App

Tuesday 2nd March

Meeting with parents/pupils at school to discuss options choices further, by invitation only

Options Curriculum Routes: 2023

Pathway P (curricular hours per week)	English and Literature (5 hrs) (2 GCSEs)	Maths (4 hrs)	Double Science (5 hrs) (2 GCSEs)	RE and PSICHE (2.5 hrs)	PE (1 hr)	Option A See Option choices (2.5 hrs)	Option B History Or Geography (2.5 hrs)	Option C Modern Foreign Language (2.5 hrs) French Arabic Urdu
Pathway Q	English and Literature (5 hrs) (2 GCSEs)	Maths (4 hrs)	Double Science (5 hrs) (2 GCSEs)	RE and PSICHE (2.5 hrs)	PE (1 hr)	Option A See Option choices (2.5 h)	Option B History Or Geography (2.5 hrs)	Option C See Option choices (2.5 hrs)
Pathway S	English and Literature (5 hrs) (2 GCSEs)	Maths (5 hrs)	Double Science (4 hrs) (2 GCSEs)	RE and PSICHE (2.5 hrs)	PE (1 hr)	Options & additional support (6.5 hrs)		

pupils at Key Stage 4 will follow one of three specifically planned 'Pathways', based upon their performance at Key Stage Three, Teacher Assessment and Target Grades.

Pathway 'P': all pupils within this Pathway will study English Language and Literature, Maths, RE and a Modern Foreign Language, as well as core PSCH and PE. Their option will be whether they choose to study Geography or History; or to study Triple Science (3 x GCSEs) or Double Science (2 x GCSEs). If they choose Double Science they have a further option choice from Block A.

Pathway 'Q': all pupils within this Pathway will study English Language and Literature, Maths, RE and Core and Additional Science as well as Core PE. Their option will be whether they choose to study Geography or History. They will then have two further option choices which could include triple science or a modern foreign language.

Pathway 'S': all pupils within this Pathway will follow a bespoke curriculum including English, Maths, Science, PSCH, PE and RE as well as tailored qualifications following discussions with Miss Langfeld.

Core Subjects

ENGLISH LANGUAGE GCSE



Examination Board:

Eduqas English Language

How will I be assessed?

The English Language qualification is assessed through formal examinations as follows:

English Language:

1 x 1hr 45min exam and 1 x 2hr exam

1 x Spoken Language individual presentation

The English Curriculum

Alongside the study of the set texts for the English Literature GCSE, all pupils write for a wide range of purposes and audiences. In creative writing, there is a strong emphasis on completing full narratives, writing from both personal experience and being more imaginative. Viewpoint writing is also explored in depth, across a range of topics and formats including speeches, letters, articles, reports and reviews. This leads on to an individual spoken language presentation, when pupils are given the opportunity to express their opinion on a topic that is personal to them and that they feel passionate about. This is internally assessed at the end of Year 10, and pupils can be awarded a pass, merit or distinction mark, which is recorded on their GCSE certificate.

Active reading of nonfiction, including understanding the writer's craft and viewpoint, is also explored in detail. Pupils read a range of 20th century and pre-19th century texts, often linked by theme, to look at the different perspectives across time about topics that are still pertinent today. Pupils also read a wide range of short stories and extracts from short stories to analyse the writer's craft and understand how writers create impressions of characters, settings and different moods and atmospheres.

How can I progress further with an English GCSE?

English qualifications provide an excellent basis for any career route either academic or vocational. Please see below for examples of both pathways.

Progression Route – 'Academic'

- A Level English courses
- Degree in English
- All university courses require grades 9-4 at least, in English, in order to get onto degree courses.
- Pupils wishing to do A Levels at sixth form level are therefore required to have this qualification in order to progress on to A Level courses.

Progression Route – 'Vocational'

- | | |
|------------------|---|
| • Journalism | • Public relations |
| • Librarian | • Advertising |
| • Teaching | • Publishing |
| • Translator | • Careers in Law |
| • Administration | • Any career that involves communication. |
| • Marketing | |

N.B.: It is a legal requirement that any pupil who does not achieve a 'good' GCSE grade in English (currently 'Grade 4') at the end of Year 11 will be required to continue to study the subject until 18.

ENGLISH LITERATURE GCSE



Examination Board:

AQA English Literature

How will I be assessed?

The English Literature qualification is assessed through formal examinations as follows:

English Literature:

1 x 1hr 45min exam and 1 x 2hr 15min exam

The English Literature Curriculum

Our English Literature curriculum is engaging and allows pupils to study a range of full texts at GCSE. These include “Macbeth” by William Shakespeare, “A Christmas Carol” by Charles Dickens, “An Inspector Calls” by JB Priestley and a range of poetry from the AQA “Power and Conflict” cluster of poems.

Pupils read the full texts, intensely studying them in Year 10, and then refining their exam skills in Year 11. Pupils are encouraged to read independently, and home learning is needed to enable pupils to develop skills and knowledge required in the examinations. We organise theatre visits and invite theatre companies into school to allow pupils to engage with the texts in performance. Through the study of Literature, pupils learn to link texts with their contexts and empathise with situations in different historical periods, and understand how writers were affected by the contexts they were writing in.

How can I progress further with an English Literature GCSE?

English qualifications provide an excellent basis for any career route either academic or vocational. Please see below for examples of both pathways.

Progression Route – ‘Academic’

- A Level English courses
- Degree in English
- All university courses require grades 9-4 at least, in English, in order to get onto degree courses.
- Pupils wishing to do A Levels at sixth form level are therefore required to have this qualification in order to progress on to A Level courses.

Progression Route – ‘Vocational’

- Journalism
- Librarian
- Teaching
- Translator
- Administration
- Marketing
- Public relations
- Advertising
- Publishing
- Careers in Law
- Any career that involves communication.

N.B.: It is a legal requirement that any pupil who does not achieve a ‘good’ GCSE grade in English (currently ‘Grade 4’) at the end of Year 11 will be required to continue to study the subject until 18.

COMBINED SCIENCE GCSE

Examination Board:

AQA



How will I be assessed?

Combined Science (Combination of Chemistry, Biology, Physics)

2 GCSE's

Study all three sciences but in less depth than Separate Sciences to gain 2 GCSE's. The course is a mixture of theory and practical science. The course is assessed by 6 x 1hr 15min exams.

The Science Curriculum

If you choose combined science you will still study Biology, Chemistry and Physics, however you will not cover the same amount of content in each topic as you would in separate science. You will receive 2 GCSE grades but they are not attached to any particular science, they are a 'combination' of your performance in all the sciences.

You will have theory lessons which will increase and enhance your subject knowledge and practical lessons where you will develop your skills. As you develop as a scientist you will learn to;

- Develop hypotheses
- Design investigations
- Use scientific apparatus to take accurate and precise readings
- Present results and analyse your data
- Draw conclusions and evaluate the validity of your findings.

You will also engage with the ethical dilemmas which accompany some scientific developments such as the uses of genetic engineering or the role of nuclear energy in combating climate change. In Combined Science you will undertake required practicals which are experiments that you will be asked about during the examinations. You will need to know the methods, how to use the equipment and how to analyse the results.

Biology	Chemistry	Physics
Osmosis Food tests Enzymes Photosynthesis Field investigations	Making salts Electrolysis Temperature changes Chromatography Water purification	Resistance V-I characteristics Density Specific heat capacity Force and extension Acceleration Waves

How can I progress further with science GCSEs?

Combined science can also lead to A-level or a vocational course. If you wish to study sciences at A-Level then separate science is the better option.

Progression Route – 'Vocational'

- Technician
- Health occupations (physiotherapy, dental or veterinary nursing etc..)
- Electrician
- Sports science
- Electronics

SEPARATE SCIENCES GCSE

Examination Board:

AQA

How will I be assessed?

Separate Sciences (Chemistry, Biology, Physics) 3 GCSE's

Study a GCSE in each science. The course is a mixture of theory and practical science.

The course is assessed by 2 x 1hr 45 min exams per subject.



The Separate Science Curriculum

You will study for a GCSE in Biology, Chemistry and Physics. This means you will receive 3 GCSE grades. You will have theory lessons which will increase and enhance your subject knowledge and practical lessons where you will develop your skills. As you develop as a scientist you will learn to:

- Develop hypotheses
- Design investigations
- Use scientific apparatus to take accurate and precise readings
- Present results and analyse your data
- Draw conclusions and evaluate the validity of your findings.

You will also engage with the ethical dilemmas which accompany some scientific developments such as the uses of genetic engineering or the role of nuclear energy in combating climate change. In each subject you will undertake required practicals (experiments) that you will be asked about during the examinations. You will need to know the methods, how to use the equipment and how to analyse the results.

Biology	Chemistry	Physics
Culturing microorganisms Effect of antibiotics on bacterial growth Osmosis Food tests Enzymes Photosynthesis Reaction time Germination Field investigations Decay	Making salts Neutralisation Electrolysis Temperature changes Rates of reaction Chromatography Identifying ions Water purification	Thermal insulation Resistance V-I characteristics Density Specific heat capacity Force and extension Acceleration Waves Light Radiation and absorption

How can I progress further with science GCSEs?

Separate sciences are the best preparation for pupils wishing to study sciences at A- level.

Progression Route – ‘Academic’

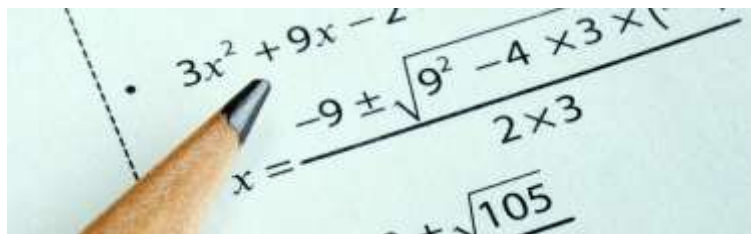
- Medicine
- Dentistry
- Veterinary
- Engineering (Civil, Mechanical, Electrical)
- Research scientist (industrial, medical and academic)

MATHEMATICS GCSE

Examination Board:

Edexcel

How will I be assessed?



Paper 1 – Non-calculator (Foundation and Higher papers – 1hr 30mins)

Paper 2 – Calculator (Foundation and Higher papers – 1hr 30 mins)

Paper 3 - Calculator (Foundation and Higher papers - 1hr 30 min)

The mathematics Curriculum

There are 243 topics which are tested on the Mathematics papers. These are broadly divided into the areas of Algebra, Ratio and Proportion, Number, Data and Statistics and Geometry. Any of the topics on the specification can appear on either/all of the papers.

A willingness to persevere with an activity when you feel unsure of your ability is essential. You will be expected to cope with not knowing and to use problem solving and reasoning skills to work out the answers to problems. You need to be prepared to work and think hard (but the buzz you get when things suddenly fall into place is worth waiting for!).

How can I progress further with a mathematics GCSE?

Almost all jobs and careers require you to have a maths GCSE but there are also many careers in which you would make a lot of use of your mathematics. These include business management, psychology, banking, ICT, engineering and medicine, to name just a few. You will also find that you will need a 5-9 grade for entry to most university courses.

Progression Route – ‘Academic’

- A Level mathematics and engineering courses
- Degrees in mathematics, statistics, all types of engineering, accounting and finance
- Pupils wishing to do A Levels at sixth form level are therefore required to have this qualification in order to progress on to A Level courses.

Progression Route – ‘Vocational’

BTEC courses

Apprenticeships

Extended Diplomas

N.B.:

It is a legal requirement that any pupil who does not achieve a ‘good’ GCSE grade in mathematics (currently ‘Grade 4’) at the end of Year 11 will be required to continue to study the subject until 18.

RELIGIOUS STUDIES GCSE

Examination Board:

Edexcel



How will I be assessed?

2 x 1hr 45min exams

- Exam 1- Religion and Ethics: Christianity
- Exam 2- Religion, Peace and Conflict: Islam

The Religious Studies Curriculum

This qualification is for pupils who enjoy learning about the two biggest religions in the UK today; Christianity and Islam and the different beliefs within them. It is for pupils who love giving their own opinion but also listening to other people's opinions and considering why not everyone agrees.

Religious Studies prepares pupils to take part in the development of tomorrow's rapidly changing world. Religious Studies contributes greatly to understanding the diversity of religion and non-religious belief in our community and the world today. It helps to foster young people's own cultural, social, spiritual and moral development. The lessons learned in Religious Studies prepare pupils for responsibilities, experiences and opportunities later in life. Religious Studies allows young people growing up in a diverse society to understand the views and opinions of people whose beliefs and values differ from their own. Lessons provide a space for young people to reflect on their own ideas and develop their thoughts about questions of meaning and ethics. The issues of religion and belief discussed in lessons frequently top the news agenda and RS helps make sense of them.

The course consists of the following topics:

- **Religion and Ethics: Christianity**- Christian Beliefs, Marriage and the Family, Living the Christian Life and Matters of Life and Death.
- **Religion, Peace and Conflict: Islam**- Muslim Beliefs, Crime and Punishment, Living the Muslim Life and Peace and Conflict.

How can I progress further with a Religious Studies GCSE?

Religious Studies qualifications provide an excellent basis for any career route either academic or vocational. Please see below for examples of both pathways.

Progression Route – 'Academic'

There are a wide range of courses that you can go on to study with a GCSE in Religious Studies:
A-Levels- Philosophy, Sociology, Psychology, Law, Politics.

Progression Route – 'Vocational'

- Public Service Industries such as the Police
- Social Worker
- Civil Service
- Youth Worker
- Charity Officer
- Teaching
- Law
- Ministry
- Hospitality
- Tourism

PHYSICAL EDUCATION (Core)

Examination Board:

Not applicable.

Compulsory one hour per week of physical education is required for all KS4 pupils.



Pupils who wish to take Physical Education as an option should refer to the subject pages for GCSE PE or Cambridge National Sports Studies.

What are the key areas of activity?

Badminton
Football
Netball
Table tennis
Fitness training
Rounders
Cricket
Athletics

Core PE

All pupils receive one hour of physical education each week with a key focus on activity and the importance of leading a healthy lifestyle. Other benefits taught include participation in lifelong sport, and the promotion of transferable skills such as communication, leadership skills, resilience, taking responsibility and working as a team.

How can I progress further with compulsory physical education?

- Develop health and fitness
- Contribute towards good mental health
- Develop hobbies and interests outside of the classroom (this is an important part of a pupil's CV)
- Develop skill levels in a range of sports
- Learn aspects of health and safety
- Develop self esteem

Option Choices

FRENCH GCSE

Examination Board:

AQA

How will I be assessed?

Exams

Foundation tier -

- Listening exam – 35 minutes
- Speaking exam – 30 minutes
- Reading exam – 45 minutes
- Writing exam – 60 minutes

Higher tier -

- Listening exam – 45 minutes
- Speaking exam – 30 minutes
- Reading exam – 60 minutes
- Writing exam - 75 minutes

The French Curriculum

MFL Core content Pupils study all of the following themes on which the assessments are based.

Theme 1: Identity and culture:

Family, Social media, technology, Music, Cinema and TV, Food and eating out, Sport, Customs and festivals in French-speaking countries/communities

Theme 2: Local, national, international and global areas of interest:

Home, town, neighbourhood and region, Social issues, Charity/voluntary work, Healthy/unhealthy living, The environment, Poverty/homelessness, Travel and tourism

Theme 3: Current and future study and employment:

My studies, Life at school/college, Education post-16, Jobs, career choices and ambitions

How can I progress further with a French GCSE?

A French GCSE qualification provides an excellent basis for any career route either academic or vocational. Please see below for examples of both pathways;

Progression Route – ‘Academic’

- A Level French courses
- Degree in French or French with another subject eg Business, TEFL, Economics, Accounting

Progression Route – ‘Vocational’

- | | |
|--------------------------------|---|
| • Business | • Diplomatic service |
| • Marketing | • Government |
| • Teaching | • Advertising |
| • Translator | • Publishing |
| • International Administration | • Careers in international Law |
| • Interpreter | • Any career that involves communication. |
| • Public relations | |



ARABIC



Course overview:

The Arabic language course focuses on developing pupils' skills (reading, writing, listening, speaking) so they can effectively communicate with Arabic speakers.

This will provide them with a deeper understanding of the society in which they live, in particular, and of Arab culture in general. Arabic is the mother tongue in 22 countries in Asia and Africa, and now ranks sixth among the most widely used languages in the world, with 246 million speakers, in addition to the 1.6 billion Muslims in the world who use it in worship.

A selection of carefully chosen texts are studied to increase pupils' language and proficiency.

Course Content

Pupils take examinations in reading, listening, speaking and writing, each of which is worth 25% of the total mark.

During the course, 5 themes are covered:

- Identity and culture;
- Local area, holiday and travel;
- School;
- Future aspirations, study and work;
- International and global dimension.

Assessment:

For Paper 1, pupils are assessed on their understanding of spoken Arabic by one or more speakers. Paper 2 is assessed internally and pupils are examined on their ability to communicate effectively in Arabic. Paper 3 focuses on their understanding of written Arabic and for Paper 4, pupils are tested on their ability to write in Arabic.

Minimum requirements:

Pupils should be comfortable working in two or three tenses and be able to read, write, speak and understand spoken Urdu before starting the course

What can I do next with GCSE Arabic?

There is an increasing interest in the Arabic language in the world, and in international organizations such as the United Nations, the International Red Cross, International Relief Agencies and UNESCO, which gives the speaker an advantage and makes them a strong competitor for a future job. Do not forget that mastering the Arabic language may open up opportunities to work in embassies of countries and consulates operating in the Arab countries.

Important note: In order to be allowed to study Arabic at GCSE you will be expected to pass a competency assessment which will evaluate your ability to read and write Arabic. It is expected that this is at least as good as your competency to read and write French. If you do not achieve the required standard your option will be amended to GCSE French

URDU AQA GCSE Full Course



Course overview:

Studying Urdu at GCSE adds an international dimension to your choice of GCSE subjects, which is something many future employers and universities look for.

As well as being a great option if you would like to work abroad, language training also develops many skills which are useful in a range of future careers, such as the ability to communicate clearly, being confident speaking in public, and using problem-solving strategies.

Urdu is a living language spoken by 490 million people around the world with over one million speakers around the world!

It is not just a practical language spoken on a daily basis, but one that has produced great scholarships and poetry. Learning Urdu will also help you recognise words in Arabic and Persian as many words are common in all three languages.

Course Content

Pupils following the Urdu GCSE course learn about the following themes and topics:

- Health
- Relationships and Choices
- Leisure
- Holidays
- Environment
- Work and Education

Assessment:

The four skills of **listening** (25%), **reading** (25%), **writing** (25%) and **speaking** (25%) are all assessed by examination at the end of Year 11.

The speaking exam will be taken with your teacher, but is assessed externally by examiners.

Minimum requirements:

Pupils should be comfortable working in two or three tenses and be able to read, write, speak and understand spoken Urdu before starting the course

What can I do next with GCSE Urdu?

Teacher	Translator
Interpreter	Travel & Tourism
Tour Guide	Construction
Reporter	Hospitality
Engineering	Creative & Media

***Important note:** In order to be allowed to study Urdu at GCSE you will be expected to pass a competency assessment which will evaluate your ability to read and write Urdu. It is expected that this is at least as good as your competency to read and write French. If you do not achieve the required standard your option will be amended to GCSE French*

GEOGRAPHY GCSE

Examination Board:

EDEXCEL, Specification A

How will I be assessed?

There will be three, 90 minute written GCSE examinations at the end of year 11.

Examinations are a mixture of multiple choice, short answer and extended answer responses. Marks are also awarded for accurate spelling, punctuation and grammar.

The Geography Curriculum

Component 1: The Physical Environment: (1hr 30min exam) 37.5% of GCSE

The changing landscapes in the UK (Rivers and Coasts), weather hazards and climate change, ecosystems, biodiversity and management.

Component 2: The Human Environment: (1hr 30min exam) 37.5% of GCSE

Changing cities, global development, resource management (energy resources).

Component 3: Geographical Investigations: (1hr 30min exam) 25% of GCSE

Urban and rural fieldwork, UK challenges

Pupils will undertake two field trips to contrasting environments to investigate the physical and human world around them. The data and statistics gathered from the field trips will be used to answer examination questions in component 3.

How can I find out more information?

Speak to Mrs Brennan or your Geography teacher.

How can I progress further with a Geography GCSE?

There are a number of different qualifications at Level 3 (A-Level) including geography, geology and environmental sciences. Geography is a broad subject and is sought-after by universities as it develops a range of qualities and skills that are beneficial to studying at Higher Education institutions. Therefore, many pupils go to University to study a wide variety of courses including engineering, architecture, medicine, teaching, town planning and The Sciences i.e. meteorology, hydrology and oceanography. Other routes see careers working for government departments (Environment Agency, DEFRA) and charities dealing with the impact of human and natural disasters.

In addition, there are vocational courses such as leisure and tourism and hotel management which rely on geographical skills, knowledge and understanding. Skills that are developed through the study of geography include critical thinking and problem solving. Regardless of your career path, future employment will depend largely on your ability to communicate with colleagues and clients, sharing your expertise to meet their needs and overcome the challenges that you are tasked with.

A previous Year 11 pupil had this to say about the course:-

"I enjoy learning about new places and linking it in with my everyday life. The work is interesting and the fieldwork trip was the best!"



HISTORY GCSE



Examination Board:

AQA History

How will I be assessed?

Two Exams: both 2 hours in duration

The History Curriculum

1D: America, 1920-1973: Opportunity and Inequality

Divided Society (Crime, Prohibition, Ku Klux Klan), New Deal, Great Society (Civil Rights, McCarthyism and Equal Rights for Women)

Module 2 - Conflict and Tension in Asia, 1950-75

Conflict in the Korean and Vietnam Wars

2A: Britain: Health and the People c.1000 to present day

Thematic study of how and why medicine and public health have developed from the influence of ancient medical treatment to the NHS today.

Elizabethan England 1558-1603

Focus on the greatest female of all time – we chart how Elizabeth turned a country torn apart by conflict that set father against son, brother against brother into a shining light of progress – despite having some serious sister issues! This component includes a compulsory trip.

How can I progress further with a History GCSE?

History provides an excellent basis for any career route either academic or vocational as highlighted below.

Progression Route – ‘Academic’

- A Level History courses
- Degree in History

Progression Route – ‘Vocational’

- Law
- Politics
- Medicine
- Medicine
- Pharmaceutical
- Dentistry
- Business

ART & DESIGN GCSE

Examination Board:

AQA

How will I be assessed?

Pupils are assessed through coursework and formal examinations as follows:

Coursework:

You will complete at least two coursework projects throughout Year 10 and Year 11. Your year 10 project will become your supporting project. During your first project you will explore and experiment with a wide range of media, materials, techniques and processes to improve your skills and identify personal strengths. You will research and work in the style of artists, designers and craftspeople of your choice. Your second project will become your main project and as such you will further develop and refine areas of strength whilst continuing to explore additional new materials and ideas. Throughout year 10 and 11 all ideas and pieces of art that you create will come from your own imagination and creativity. Your art teachers are there to guide and support your learning and skills development whilst you design, craft and create your own ideas. Your only limitation will be your imagination! These coursework projects are worth 60% of your overall grade.

Exam:

You will be required to produce a final externally set project which will result in a 10 hour exam that will take place during school lesson times. You will sit this exam over two days in the art room. This exam project is worth 40% of your final grade.

The Art Curriculum

You will be given a starting point, such as 'portraits', 'identity', 'structures' or 'natural forms' for example. You will research the work of other artists, designers, craftspeople and photographers to help you to develop your own ideas, style and artwork. You will be required to work from your own photographs as a starting point so must be proactive and able to use initiative and work independently. You must also be hard working and able to complete work in class and in your own time to specific deadlines. On the GCSE Art, Craft & Design course you are required to demonstrate skills using a range of materials, skills, techniques and processes. You are to explore and experiment with and select from; drawing, painting, pastels, sculpture, 3D construction, surface textiles, printing, graphic design or any other media to complete your artwork.

Excellent imagination, creativity and use of initiative are essential on the GCSE Art, Craft and Design course as you will gain marks for originality and personal response.

How can I progress further with an Art GCSE?

The examining board recently conducted a survey of 100,000 different UK businesses and found that art based GCSE's were the THIRD most sought-after qualification to these employers. Over 1,000,000 people in the UK are currently working in art related jobs. Many recent career paths are design and/or internet based, and these job roles rely heavily on art and what is called 'visual literacy'. Graphic design, media, magazines, product design, architecture, interior design, fashion design, illustration, theatrical or film makeup and costume design, web or game design to name just a few – they all need art!

Progression Route – 'Academic'

- A Level or BTEC; Art, Fine Art, Graphic Design, 3D or Ceramics courses.
- Degree of Higher National Diploma ('HND') level in all of the above and more.



Progression Route – ‘Vocational’

Art and Design, Art Director, Typographer, Producer, Graphic Design, Architect, Art Therapist, Photo-Journalist, Interior Designer, Product Designer, Furniture Designer, Jewellery Designer, Fashion Designer, Website Designer, Gaming Design/Development, Television or Media, Museum or Gallery Curator, Sculptor, Illustrator, Animator, Photographer, Videographer, Florist, Set Designer, Art Teacher, College Tutor, University Tutor, Makeup or Costume Artist/Designer, Special effects Make-Up Artists, Cake or Food Designer/Stylist, Transport Designer, Industrial Designer, Blogger/Vlogger, Social Media Content Designer, Landscape Architect, App Designer, Court Artist, Tattoo Artist – the list is endless!

BUSINESS GCSE

Examination Board:

Edexcel

How will I be assessed?

Pupils will sit two examinations:

Theme 1 - Investigating small business (50%)

Theme 2 - Building a Business (50%)

The Business Curriculum

Theme 1 concentrates on the key business concepts, issues and skills involved in starting and running a small business. It provides a framework for pupils to explore core concepts through the lens of an entrepreneur setting up a business. In this theme pupils will be introduced to local and national business contexts and will develop an understanding of how these contexts impact business behaviour and decisions.

Theme 2 examines how a business develops beyond the start-up phase. It focuses on the key business concepts, issues and decisions used to grow a business, with an emphasis on aspects of marketing, operations, finance and human resources. It also considers the impact of the wider world on the decisions a business makes as it grows. In this theme pupils will be introduced to national and global business contexts and will develop an understanding of how these contexts impact business behaviour and decisions.

How can I progress further with this qualification?

- Level 3, AS and A level Business
- Degree-level qualifications in Business and Enterprise
- Management qualifications
- Careers in management, marketing, project management, human resources

How can I find out more? For further information on this course, you should talk to:
Mrs Coulthard.



COMPUTER SCIENCE GCSE

Examination Board

Edexcel



How will I be assessed?

Pupils will sit one paper based examination and one on screen practical exam:

Unit 1 - Principles of Computer Science (50%)

Unit 2 - Application of Computational Thinking (50% on-screen, practical assessment of programming using Python)

The Computer Science Curriculum

- Understand and apply the fundamental principles and concepts of computer science, including abstraction, decomposition, logic, algorithms, and data representation
- Understand how computers manipulate binary data arithmetically (binary addition, binary shifts, two's complement signed integers)
- Analyse problems in computational terms through practical experience of solving such problems, including designing, writing and debugging programs using a high-level programming language (Python)
- Think creatively, innovatively, analytically, logically and critically
- Understand the components that make up digital systems, and how they communicate with one another and with other systems
- Understand the impacts of digital technology to the individual and to wider society apply mathematical skills relevant to computer science.

How can I progress further with this qualification?

- Level 3, AS and A level Computer Science
- Computer Programmer
- Software Engineer
- Database Administrator
- Systems Administrator
- ICT technician or network manager

How can I find out more? For further information on this course, please speak to Mrs Coulthard.

CREATIVE iMEDIA

Cambridge National



Examination Board:

OCR - Cambridge National Level 2

How will I be assessed?

The course consists of a single written examination and a further 2 coursework units which are completed in school and externally moderated by the examination board

Examination Unit:

R093: Creative iMedia in the media industry

1 hour 30 mins Written exam paper.

Coursework Units:

R094: Visual identity and digital graphics

R097: Interactive digital media

The Creative iMedia Curriculum

The Cambridge Nationals in Creative iMedia will be a vocational course designed to equip pupils with a range of creative media skills and provide opportunities to develop, in context, desirable, transferable skills such as research, planning, and review, working with others and communicating creative concepts effectively. Pupils will demonstrate effective use of these skills to develop creative media products to meet client requirements

R093: Creative iMedia in the media industry

- Sectors, products and job roles that form the media industry.
- Legal and ethical issues considered and the processes used to plan and create digital media products.
- How media codes are used within the creation of media products to convey meaning, create impact and engage audiences.
- Choosing the most appropriate format and properties for different media products.

R094: Visual identity and digital graphics

- Developing visual identities for clients.
- Apply the concepts of graphic design to create original digital graphics which incorporate their visual identity to engage a target audience.

R097: Interactive digital media

- Design and create interactive digital media products for chosen platforms.
- Select, edit and repurpose multimedia content of different kinds and create the structure and interactive elements necessary for an effective user experience.

How can I progress further with a Level 2 Certificate in Creative iMedia?

Completing this course will provide pupils with the basic skills for further study of Level 3 Media, ICT and Creative Arts courses or a range of creative and technical job roles within graphic design and media disciplines.

Progression Route – ‘Vocational’

- Graphic Designer
- Digital Illustrator/Graphic Artist
- Web Designer
- Computer Game (Design roles)
- Content creator
- Videographer
- Journalist



HEALTH & SOCIAL CARE

BTEC



Examination Board:

Pearson BTEC level 1 and 2

How will I be assessed?

Component 1: Human Lifespan Development – 30 % controlled assessment

Component 2: Health and Social Care Services and Values – 30% controlled assessment

Component 3: Health and Wellbeing - 40% 2 hour examination

The Health and Social Care Curriculum

Component 1: Human Lifespan Development

Pupils will explore different aspects of growth and development and the factors that can affect this across the life stages. They will explore the different events that can impact on individuals' physical, intellectual, emotional and social development and how individuals cope with and are supported through changes caused by life events.

Component 2: Health and Social Care Services and Values Learners will explore health and social care services and how they meet the needs of service users. They will also study the skills, attributes and values required when giving care.

Component 3: Health and Wellbeing Learners will explore the factors that affect health and wellbeing, learning about physiological and lifestyle indicators, and person-centred approaches to make recommendations to improve an individual's health and wellbeing.

How can I progress further with this qualification?

Pupils can go on to study Level 3 Health and Social Care or they can use this qualification and study A Levels in a broad range of subjects relating to the health and social care sectors, for example, they may choose to study psychology or medicine.

Progression Route

- Child care
- Psychology
- Nursing
- Social work
- Care worker
- Teaching
- Nutritionist

HOSPITALITY AND CATERING

Vocational Award



Examination Board:

Eduqas Level 1 and 2 Vocational Award in Hospitality and Catering

How will I be assessed?

Hospitality and Catering is assessed by:

- a) an on screen examination taken at the end of Year 10 (1 hour 30 mins)
- b) non- examined unit (coursework) which includes a 3 hour practical examination.

You will be graded a Level 2 Distinction to a Level 1 Pass

The Hospitality and Catering Curriculum

This course will develop your knowledge and understanding of a range of hospitality and catering providers; how they operate and what they have to take into account to be successful. There is the opportunity to learn about issues related to nutrition and food safety and how they affect successful hospitality and catering operations. You will also develop high level food preparation and cooking skills as well as transferable skills of problem solving, organisation and time management, planning and communication.

Unit 1 - 'The Hospitality and Catering Industry' which is examined at the end of year 10 (40%).

Unit 2 - 'Hospitality and Catering in Action' which is a centre assessed task completed in Year 11 and includes high level practical work which is carried out in both Years 10 and 11 (60%).

There will be the expectation that pupils will provide their own ingredients for practical sessions.

How can I progress further with a Vocational Award in Hospitality and Catering?

Employment in hospitality and catering can range from waiting staff, receptionists and catering assistants to chefs, hotel and bar managers and food technologists in food manufacturing. All of these roles require further education and training either through apprenticeships or further and higher education.

However this award covers content that would be considered beneficial to professions such as teaching, nursery assistants, nursing and a range of other caring and medical professions.

Progression Route –

Level 3 Hospitality or Catering

Apprenticeships within the Hospitality and catering industry

A-Levels

MUSIC



Examination Boards:

Pearson BTEC Tech Award Level 1/2
In Music Practice

How will I be assessed?

In KS4 Music, there is no written exam. The course is 100% coursework.

Component 1 Exploring Music Products and Styles Year 10 (submitted in May)

Component 2 Music Skills Development Year 10/11 (submitted in December)

Component 3 Responding to a Music Brief Year 11 (submitted in May)

The Curriculum

Music in KS4 is very similar to music in KS3. You will learn about different styles of music and you will be required to complete practical tasks based around those different styles of music.

The styles of music include; Romantic music, Film music, Rock 'n' Roll, Minimalism, Reggae and Electronic Dance Music.

There is also a large focus on improving your skills as a musician individually through performance and composition.

How can I progress further with a BTech qualification in Music?

The skills learnt will help you progress onto further study in the Exercise, Physical Activity, Sport and Health sector. This may be Level 3 vocational qualifications, such as the Cambridge Technical in Sport and Physical Activity, AS or A-Levels, such as Physical Education, Psychology, Sociology, Sport and media or an apprenticeship in Community activator coach, Leisure team members, Personal trainer or Outdoor activity instructor.

This can include progression into areas such as:

Composer

Performer

Teacher/Tutor

Sound Engineer

Recording Studio Manager

Music Therapist

DJ

Music Producer

Lyricist

Accompanist

Agent

Concert Hall Manager

Conductor

Concert Promoter

Entertainment Lawyers

Festival Director

Lighting Technician

Music Web Designer

Session Musician

PHOTOGRAPHY GCSE

Examination Board:

AQA

How will I be assessed?

Pupils are assessed through coursework and formal examinations as follows:

Coursework:

You will undertake at least two projects during Year 10 and Year 11. Your coursework is at least one of these projects, plus the 'best bits' of your other work.

Exam:

Pupils have a 10 hour exam that takes place at normal school lesson times – you will spend all 5 periods of two days in the art room working on your exam. Don't panic - you WON'T spend 10 straight hours in an exam room.

The Photography Curriculum

You will be given a starting point, such as 'portraits', 'landscape', 'music' or 'fashion'. You will then look at the work of other photographers and develop YOUR OWN ideas from your own starting points (photos) which will be developed using different materials and techniques to create a 'final piece' over several months.

The photography GCSE is very similar to the Art & Design GCSE in terms of 'creativity' and 'imagination', but Photography is less 'drawing and painting' and more software based using Photoshop and animation. Photography still involves some drawing and painting, though not to the same standard or amount as the Art GCSE.

Both courses require good imagination and creativity as you will be marked on the originality and uniqueness of your work. We have a set of 'DSLR' cameras that pupils use, but we also work a lot with iPads which all pupils have.

How can I progress further with a Photography GCSE?

The AQA examining board recently did a survey of 100,000 different UK businesses and found that Art based GCSEs such as Photography were the THIRD most sought-after qualification to these employers. Over 1,000,000 people in the UK are currently working in Art/Photography related jobs. Almost EVERYTHING these days is internet based, and the internet relies on software and Photography! Graphics, Media, Film making & editing, magazines, web or game design – they all need Photography!

Progression Route – 'Academic'

- A Level or BTEC in Graphics, Photography, Fashion or Film Study courses
- Degree of Higher National Diploma ('HND') level in all of the above

Progression Route – 'Vocational'

Graphic Designer, Film Editor, App Developer, YouTube creator, Fashion designer, Website Design, Gaming Development, Television or Media, Museum or Gallery Curator – the list is endless!



SPORTS STUDIES

Cambridge National



Examination Boards:

OCR Cambridge National

How will I be assessed?

The course is assessed as follows:

R184: Contemporary issues in sport (marked by an exam and assessed externally)

R185: Performance and leadership in sports activities

R186: Sports and the media

The Curriculum

You will develop knowledge, understanding and skills that you can apply to a range of approaches that are relevant to the workplace or higher education. You will be able to work with independence to create material which shows effective planning, development and evaluation and an ability to demonstrate practical skills and qualities.

You will develop the skills to produce work that is complete and coherent, demonstrating independence and understanding. You will be able to:

- Recall, select and apply knowledge and understanding, using practical sporting examples
- Demonstrate knowledge and understanding of physical and psychological factors that affect performance as well as demonstrating your practical performance skills within two sporting activities
- Identify, plan and carry out a range of activities and exercises to prepare for, and recover from, sporting activities
- Demonstrate awareness of how to meet specific needs when developing and delivering different physical activity programmes
- Use technical language and terminology correctly
- Demonstrate evaluative skills.

How can I progress further with a Cambridge National in Sport Studies?

These skills will help you progress onto further study in the Exercise, Physical Activity, Sport and Health sector. This may be Level 3 vocational qualifications, such as the Cambridge Technical in Sport and Physical Activity, AS or A-Levels, such as Physical Education, Psychology, Sociology, Sport or Media or an apprenticeship in Community activator coach, Leisure team members, Personal trainer or Outdoor activity instructor.

This can include progression into areas such as:-

- Recreational Management
- Leisure Centres
- Coaching
- Officiating
- The Fitness Industry
- The Armed Forces and Civil Service
- Physiotherapy
- Teaching
- Events management

GCSE PE (OCR)



Examination Boards:

OCR

How will I be assessed?

60% is examined by two 1-hour exams in year 11.

40% is examined practically.

Pupils will need to choose three sports (one team sport, one individual sport and one other of either). Pupils have free choice of over a number of different sports they can be assessed in. Pupils will also have to produce a piece of coursework analysing and Evaluating Performance (AEP)

The Curriculum

- Applied anatomy and physiology
- Movement analysis
- Physical training
- Health, fitness and well-being
- Sport Psychology
- Use of data

How can I progress further with a GCSE PE qualification?

The skills learnt will help you progress onto further study in the Exercise, Physical Activity, Sport and Health sector. This may be Level 3 vocational qualifications, such as the Cambridge Technical in Sport and Physical Activity, AS or A-Levels, such as Physical Education, Psychology, Sociology, Sport and media or an apprenticeship in Community activator coach, Leisure team members, Personal trainer or Outdoor activity instructor.

This can include progression into areas such as:

- Recreational Management
- Leisure Centres
- Coaching
- Officiating
- The Fitness Industry
- The Armed Forces and Civil Service
- Physiotherapy
- Teaching
- Events management

DESIGN & TECHNOLOGY GCSE



Examination Board:

Eduqas Design and Technology

How will I be assessed?

1 x 2hr examination (50%) taken at the end of Year 11

1 x non-examined assessment (coursework) which takes approx.

35 hours (50%) You will be graded 9-1

The Design and Technology Curriculum

The written examination: A mix of short answer, structured and extended writing questions assessing your knowledge and understanding of five clear and distinct topic areas:

- design and technology and our world
- smart materials, electronic systems and programmable components
- mechanical components and devices
- materials - characteristics and functions of a wide range of wood, metal, paper, plastics and boards. One material will be studied in more depth than others.

The Non-examined assessment: This is based on a design and make task set by EDUQAS, assessing your ability to:

- identify, investigate and outline design possibilities
- design and make prototypes
- analyse and evaluate design decisions and wider issues in design and technology

Pupils will be expected to be creative and innovative and come up with their own ideas for individual designs for new products independently. They will be able to choose to work with a range of different materials and select one for their non-examined assessment.

How can I progress further with a Design and Technology GCSE?

This course provides a suitable foundation for the study of design and technology and Engineering at either AS, A level or apprenticeships.

Progression Route – ‘Academic’

- A level in Product design
- A Level in Engineering

Progression Route – ‘Vocational’

- Product designer
- Architect
- Electrician
- Engineering – a wide range of further education courses are available